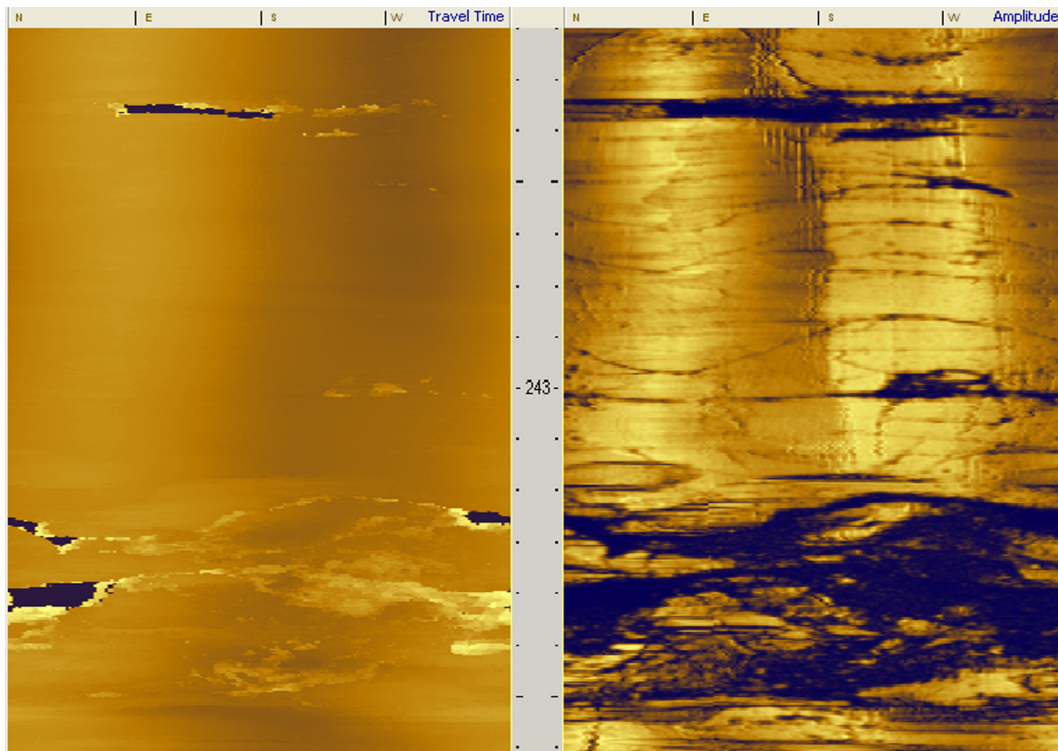


Acoustic Borehole Televiewer

The Acoustic Borehole Televiewer provides continuous logs of oriented, unwrapped images of borehole walls. Further processing allows for the computation and display of standard information on fractures and other geological features.

Unlike the Optical Televiewer, the Acoustic Televiewer can be run in both clear and opaque mud.



N.B.: Both imaging (Optical and Acoustic) probes require a communications modem.

Specifications:

Dimensions & Weight: Length: 2.10 m ; Diameter: 42 mm; Weight: 10 kg

Acoustical Subsystem:

- Frequency: 1.5 MHz
- Beam angle: 3° conical
- Rotation speed: up to 20 rev/sec
- Sampling density : 90, 120, 180 or 360 per revolution
- Acquisition sampling rate: 100 nS
- Gain: 0 to 60 dB in 1 dB steps or Automatic Gain Control (AGC)
- Acquisition resolution: 8 bits

Deviation Subsystem:

- 3-axis magnetometer - Azimuth accuracy: $\pm 2.5^\circ$
- 3-axis accelerometer - Inclination accuracy: $\pm 0.4^\circ$

Log Parameters:

- 360° oriented Travel Time Image (12-bit resolution / 100 ns per bit)
- 360° oriented Amplitude Image
- Borehole azimuth and dip

Operating Conditions : Fluid filled boreholes; Max. Pressure 20MPa; Max. Temperature: 60°C

Borehole Diameter Range: 50 to over 400 mm , depending on borehole fluid conditions

Geovista reserve the right to change the products' list and specifications without prior notice